

Anti-CHRM2 Antibody
Rabbit polyclonal antibody to CHRM2
Catalog # AP61231**Specification**

Anti-CHRM2 Antibody - Product Information

Application	WB, IF/IC
Primary Accession	P08172
Other Accession	Q9ERZ4
Reactivity	Human, Mouse, Rat, Pig, Bovine
Host	Rabbit
Clonality	Polyclonal
Calculated MW	51715

Anti-CHRM2 Antibody - Additional Information**Gene ID** 1129**Other Names**

Muscarinic acetylcholine receptor M2

Target/Specificity

KLH-conjugated synthetic peptide encompassing a sequence within the center region of human CHRM2. The exact sequence is proprietary.

Dilution

WB~~WB (1/500 - 1/1000), IF/IC (1/100 - 1/500)

IF/IC~~N/A

Format

Liquid in 0.42% Potassium phosphate, 0.87% Sodium chloride, pH 7.3, 30% glycerol, and 0.09% (W/V) sodium azide.

Storage

Store at -20 °C. Stable for 12 months from date of receipt

Anti-CHRM2 Antibody - Protein Information**Name** CHRM2**Function**

Muscarinic receptor for acetylcholine, a neurotransmitter found in the brain, neuromuscular junctions and the autonomic ganglia (PubMed: [24256733](http://www.uniprot.org/citations/24256733), PubMed: [3443095](http://www.uniprot.org/citations/3443095), PubMed: [36690613](http://www.uniprot.org/citations/36690613)). Ligand binding causes a conformation change that triggers signaling via guanine nucleotide-binding proteins (G proteins) and modulates the activity of downstream effectors, such as adenylate

cyclase (PubMed:36690613). CHRM2 is coupled to G(i)/G(o) (GNAI1 or GNAO1) G proteins and mediates signaling by inhibiting adenylate cyclase activity (PubMed:36690613).

Cellular Location

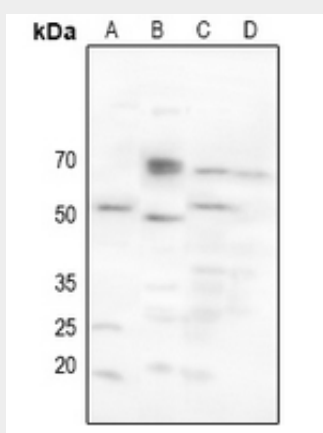
Cell membrane; Multi-pass membrane protein. Postsynaptic cell membrane; Multi-pass membrane protein. Note=Phosphorylation in response to agonist binding promotes receptor internalization {ECO:0000250|UniProtKB:P06199}

Anti-CHRM2 Antibody - Protocols

Provided below are standard protocols that you may find useful for product applications.

- [Western Blot](#)
- [Blocking Peptides](#)
- [Dot Blot](#)
- [Immunohistochemistry](#)
- [Immunofluorescence](#)
- [Immunoprecipitation](#)
- [Flow Cytometry](#)
- [Cell Culture](#)

Anti-CHRM2 Antibody - Images



Western blot analysis of CHRM2 expression in HEK293T (A), mouse lung (B), mouse kidney (C), rat kidney (D) whole cell lysates.



Immunofluorescent analysis of CHRM2 staining in LOVO cells. Formalin-fixed cells were permeabilized with 0.1% Triton X-100 in TBS for 5-10 minutes and blocked with 3% BSA-PBS for 30 minutes at room temperature. Cells were probed with the primary antibody in 3% BSA-PBS and incubated overnight at 4 °C in a humidified chamber. Cells were washed with PBST and incubated with a Alexa Fluor 594-conjugated secondary antibody (red) in PBS at room temperature in the dark.

Anti-CHRM2 Antibody - Background

KLH-conjugated synthetic peptide encompassing a sequence within the center region of human CHRM2. The exact sequence is proprietary.